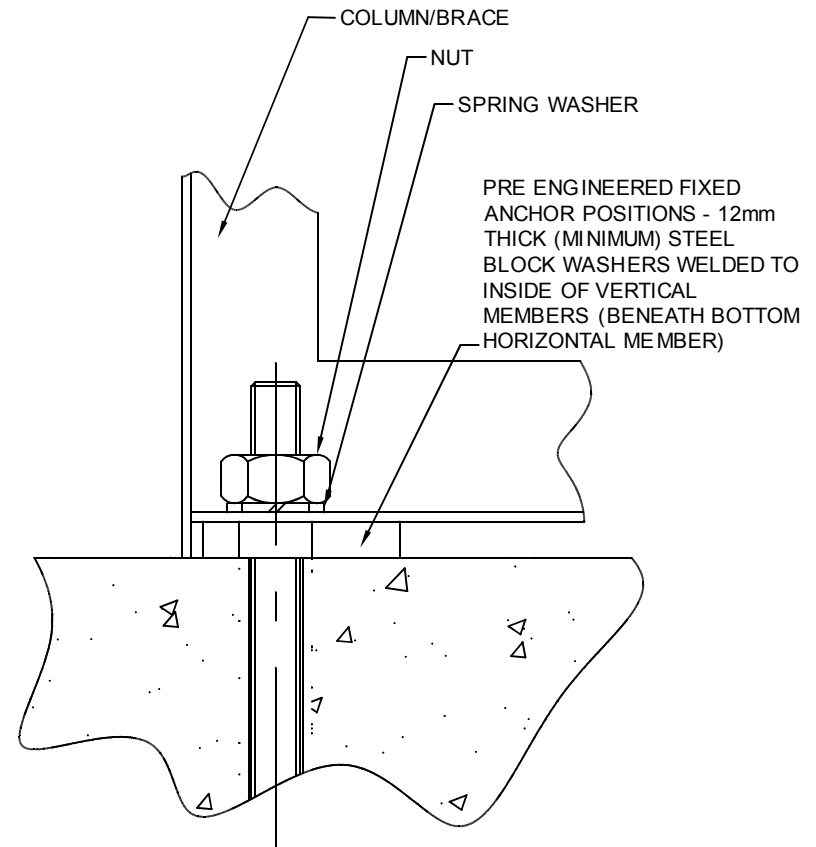
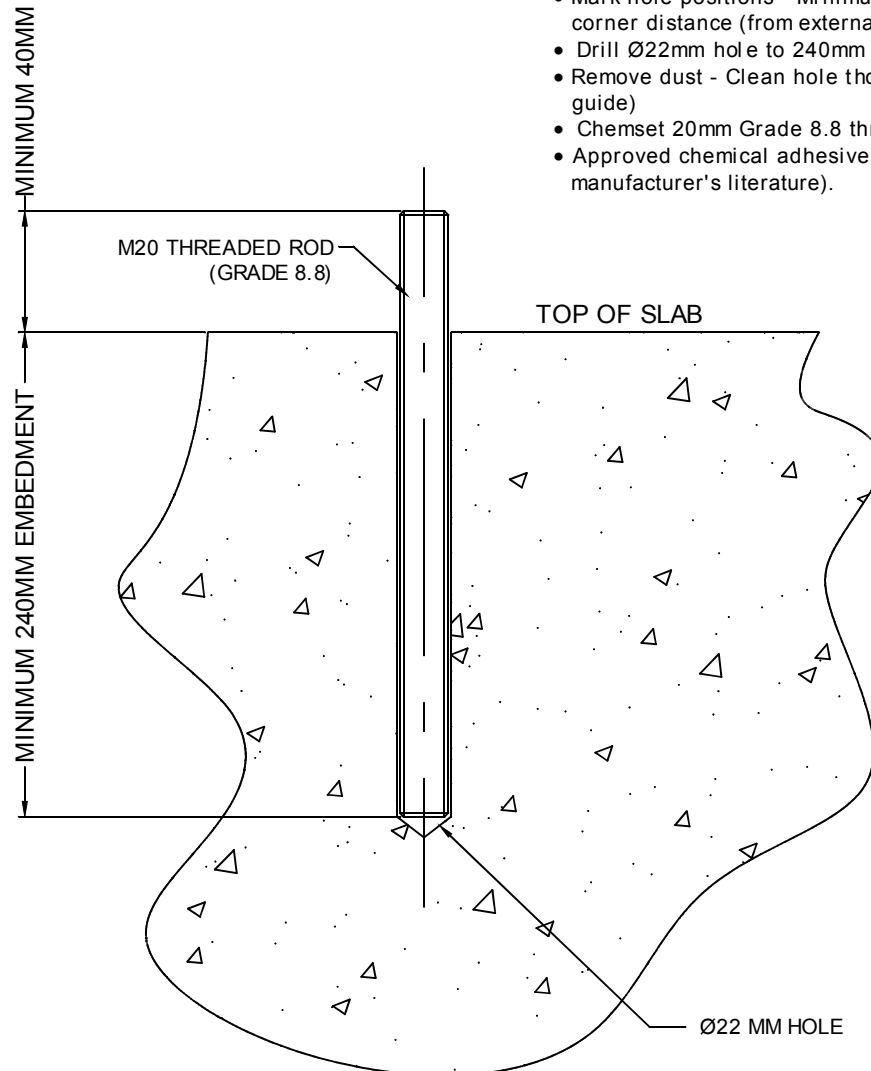


POWERTRUSS CHEMICAL ANCHOR INSTALLATION INSTRUCTIONS (20MM)

- Mark hole positions - Minimum 60mm edge distance (face of slab to centre of bolt), & minimum 101mm corner distance (from external corner of slab to centre of bolt).
- Drill $\varnothing 22$ mm hole to 240mm minimum depth.
- Remove dust - Clean hole thoroughly with brush & air pump twice (refer Ramset Reo502 PLUS installation guide)
- Chemset 20mm Grade 8.8 threaded rod and allow to set before tightening.
- Approved chemical adhesive to suit load capacities is Ramset Reo502 PLUS (refer to chemical adhesive manufacturer's literature).



POWERTRUSS WALL BRACING SYSTEM

Queensland (Head Office)

Unit 4-175 Railway Pde
THORNESIDE, QLD. 4158
Phone: (07) 3245 4930
Facsimile: (07) 3245 4838
Email: chris@powertruss.com.au

New South Wales

18-20 Charles Street
ST. MARYS, NSW 2760
Phone: (02) 8646 3366
Email: nsw@powertruss.com.au

Victoria

16 Gaine Road
DANDENONG SOUTH, VIC. 3175
Phone: (03) 9799 9122
Facsimile: (03) 9799 9800
Email: alex@powertruss.com.au