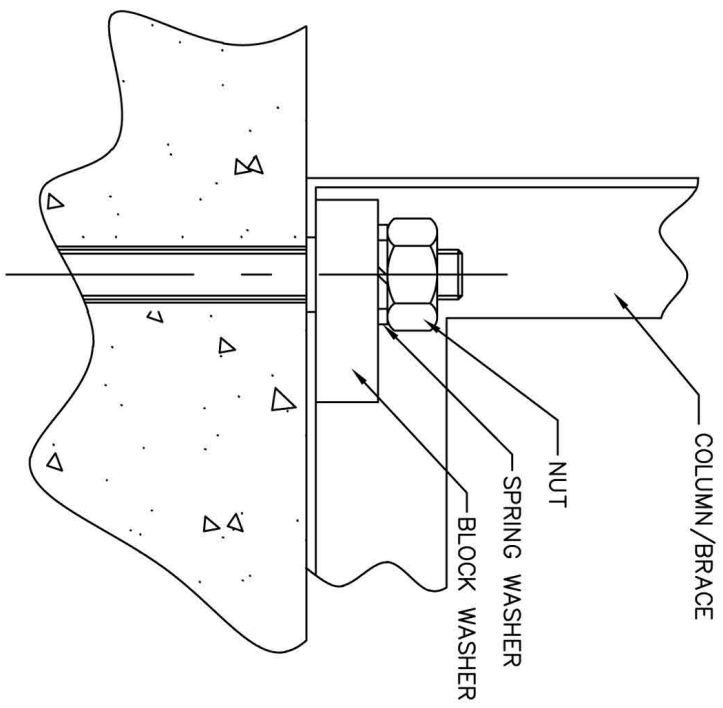
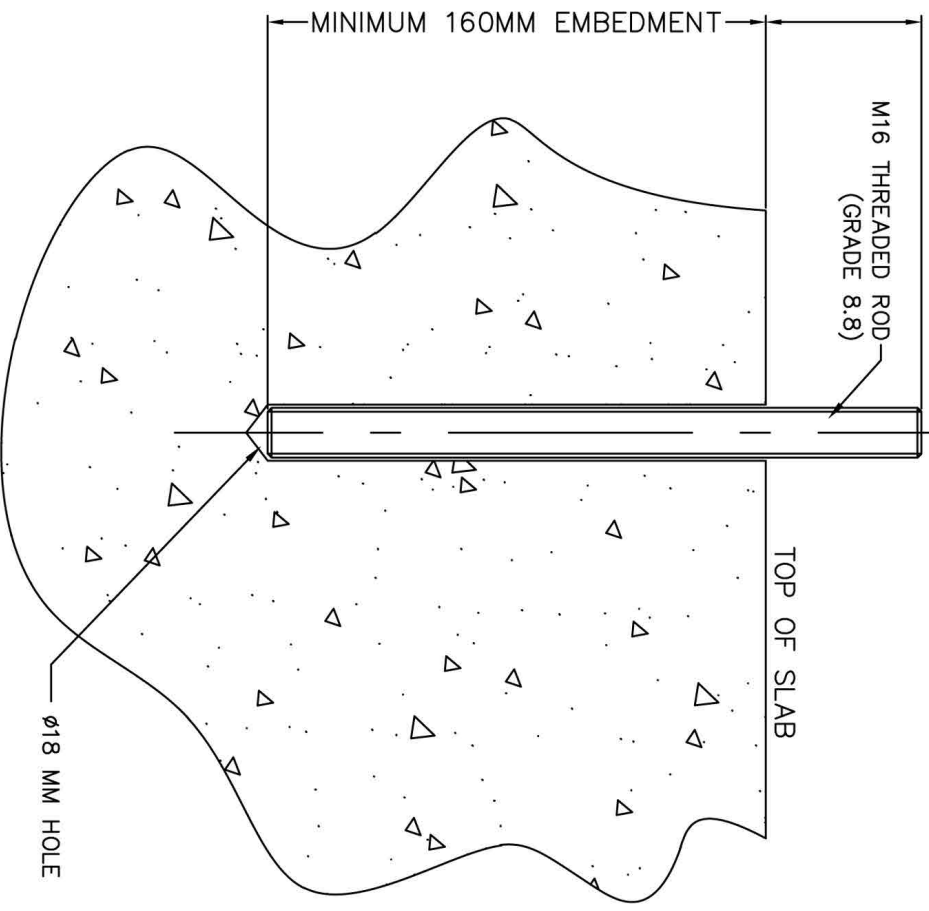


POWERTRUSS CHEMICAL ANCHOR INSTALLATION INSTRUCTIONS (16MM)

- Mark hole positions - Minimum 50mm edge distance (face of slab to centre of bolt), & minimum 101mm corner distance (from external corner of slab to centre of bolt).
- Drill $\varnothing 18\text{mm}$ hole to 160mm minimum depth.
- Remove dust - Clean hole thoroughly with brush & air pump twice (refer Ramset Reo502 installation guide)
- Chemset 16mm Grade 8.8 threaded rod and allow to set before tightening.
- Approved chemical adhesive to suit load capacities is Ramset Reo502 (refer to chemical adhesive manufacturer's literature).



POWERTRUSS WALL BRACING SYSTEM

Queensland (Head Office)

Unit 4-175 Railway Pde
 THORNESIDE, QLD. 4158
 Phone: (07) 3245 4930
 Facsimile: (07) 3245 4838
 Email: neil@powertruss.com.au

New South Wales

3 Noongah Road
 NELSONS PLAINS, NSW 2324
 Phone: 0410 783 191
 Email: chris@powertruss.com.au

Victoria

16 Gaine Road
 DANDENONG SOUTH, VIC. 3175
 Phone: (03) 9799 9122
 Facsimile: (03) 9799 9800
 Email: alex@powertruss.com.au



Key Features

- Extra heavy duty epoxy
- Quick 3 hour cure time
- Dry, damp, wet and flooded holes
- Suitable underwater
- Long 20 minute working time for deep embedment

Description

Extra heavy duty anchoring of reinforcing bar and threaded studs into solid concrete and stone. Two-component, high bond strength epoxy adhesive specially designed for structural connections, such as reinforcing bar. Suitable for dry, damp, wet and flooded holes. Quick setting for improved productivity. Long working time to reduce nozzle wastage. Bar development lengths in accordance with AS3600. Structural reinforcing bar connections in slabs, columns, beams and walls. Structural steel columns, raker angles, seating.

Typical Properties

Properties	Typical Value
Appearance	Part A: White Part B: Black Mixed: Light Grey
Density	1.28 kg /litre @ 20°C
Heat Distortion Temperature	Approx. 80°C
Hardness	> Shore D 80
Compressive Strength (ASTM C579-01)	105 MPa
Dielectric Constant	3.95
Conductivity	8×10^{-11} ohmS/m
Service Temperature Limits	-10°C to 80°C
Chemical Resistance	See Technical Data Sheet
Substrates	Solid Concrete, Solid Stone (Proof loading recommended), Solid Brick



Features & Benefits

- Quick cure for improved productivity.
- Sag resistant formula for horizontal holes
- Bonds to carbide and diamond core drilled holes – strong bond
- For Grade 500 reinforcing bar
- Excellent electrical insulation properties

Related Products

- | | |
|-------------------------|-----------------------|
| DynaDrill™ | Impact Wrench |
| Carbide Drill Bits | Wet/Dry Vacuum |
| Diamond Motor | Hole Cleaning Brushes |
| Diamond Core Drill Bits | Hole Cleaning Pump |

Trades & Applications

	Concreter	Building Contractor	Civil Contractor	Steel Fabricator	Balustrade Contractor	Formworker	Bricklayer	Fitter
Post-installing reinforcing bar	✓	✓	✓			✓		
Starter bars	✓	✓	✓			✓	✓	
Threaded studs		✓	✓	✓	✓			✓